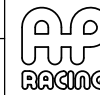


B1 INSTALLATION DRAWING

IF THIS DOCUMENT IS PRINTED IN HARDCOPY, IT IS FOR INFORMATION USE ONLY AND THEREFORE IS NOT SUBJECT TO UPDATING CONTROLS. ALWAYS REFER TO SOLIDWORKS VIEWER FOR LATEST ISSUE



THIS DRAWING IS CONFIDENTIAL AND IS SUPPLIED ON THE EXPRESS CONDITION THAT IT SHALL NOT BE LOANED OR COPIED OR DISCLOSED TO ANY OTHER PERSON OR USED FOR ANY OTHER PURPOSE WITHOUT THE WRITTEN CONSENT OF AP RACING LTD.



AP Racing
Wheler Road
Coventry
CV3 4LB
Tel: +44 024 7663 9595
Fax: +44 024 7663 9559
e-mail: sales@apracing.co.uk
Web site: HTTP://www.apracing.com

Issue No.	Alterations			Zone	Initials
	Date & No.	Particulars			
01	23/05/24 B9594	FIRST ISSUE			PB
02	25/11/24 B8584_10	CALIPER BODY GEOMETRY MODIFIED ON MOUNTING SIDE.			PB

CP5567-14 / 15S4L SPECIFICATION

GENERAL DESCRIPTION

4 PISTON DIFFERENTIAL BORE CALIPER TO SUIT UP TO Ø280x28mm CAST IRON OR CARBON-CARBON DISC WITH A FIXED BRIDGE DESIGN.

TYPICAL APPLICATION

SINGLE SEATERS / FORMULA CARS / 13" WHEELS

CALIPER SPECIFICATION		
	CAST IRON	CARBON-CARBON
BORE SIZE	GK (34.93 x 41.28) (1.375" x 1.625")	
PISTON AREA (TOTAL)	46.23cm ²	
DISC DIAMETER MAX	280mm	
DISC THICKNESS	26.00-28.00mm NEW 25.00mm MINIMUM WORN	26.00-28.00mm NEW SEE DISC WEAR INDICATORS ON EACH SIDE (REFER TO CD)
PAD FAMILY	CP3345	CONTACT APR TECHNICAL SALES
PAD THICKNESS MAX	15.90mm	17.00mm (FOR 28.00mm DISCS)
PAD THICKNESS MIN	4.50mm	10.00mm
STACK WIDTH NEW	59.80mm	62.00mm
STACK WIDTH WORN	34.00mm (ASSUMING EVEN WEAR)	39.00mm (ASSUMING EVEN WEAR)
MAX WEAR PER SIDE	12.90mm	11.50mm SEE DISC AND PAD WEAR INDICATORS ON EACH SIDE
HYDRAULIC FEED	M10 x 1.0 9.0 THREAD DEPTH	
DRY WEIGHT (WITHOUT PADS)	1.65kg (EST.)	
EFFECTIVE RADIUS (ON Ø280mm DISC)	117.90mm	
'PL' DIMENSION (TOP OF PAD FRICTION MATERIAL TO CALIPER MOUNTING FACE)	50.50mm	
'C' DIMENSION (CALIPER OFFSET)	30.00mm	
'U' DIMENSION (UPRIGHT MOUNTING)	89.50mm (FOR 280mm DISC) U = (DISC Ø/2) - PL	
TIGHTENING TORQUES	BLEED SCREW: 17Nm PAD LEDGE SCREWS: 4Nm TYPICAL M10 MOUNTING BOLT: 54Nm (GUIDANCE ONLY)	

CALIPER POSITIONING	
RHN	RIGHT HAND LEADING OR TRAILING
LHN	LEFT HAND LEADING OR TRAILING

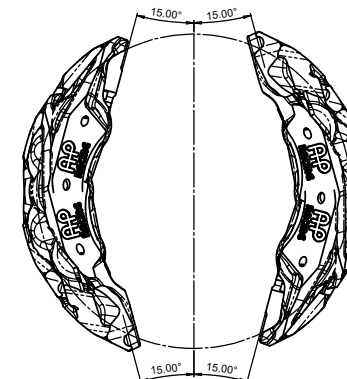
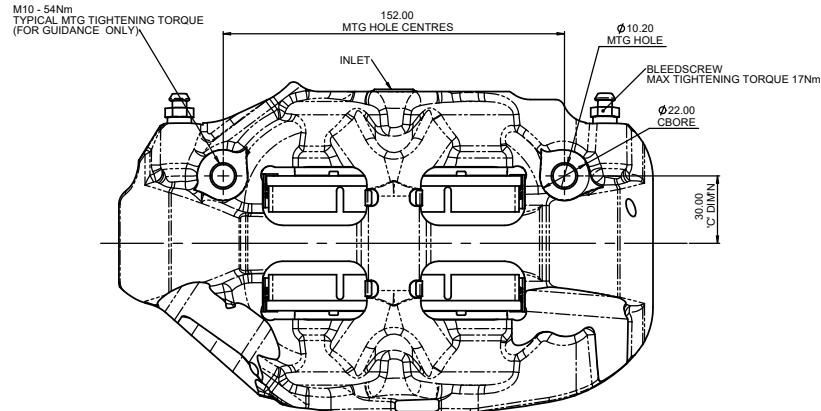
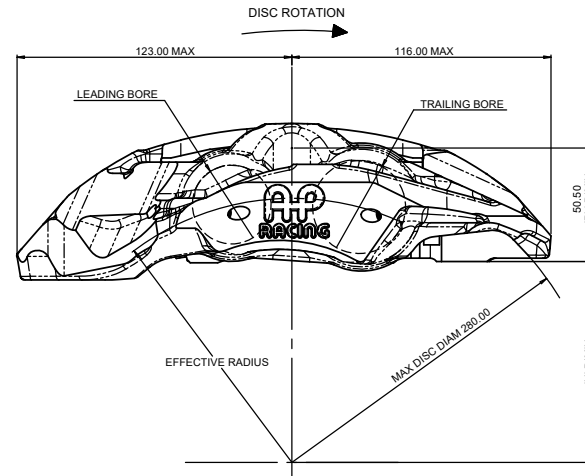
PART NUMBERING CONVENTION	
PART NUMBER	DESCRIPTION
CP5567-14S4L	RH - SIDE FEED - 4lb AKB SPRING - STAINLESS STEEL PISTONS
CP5567-15S4L	LH - SIDE FEED - 4lb AKB SPRING - STAINLESS STEEL PISTONS

INSTALLATION INFORMATION

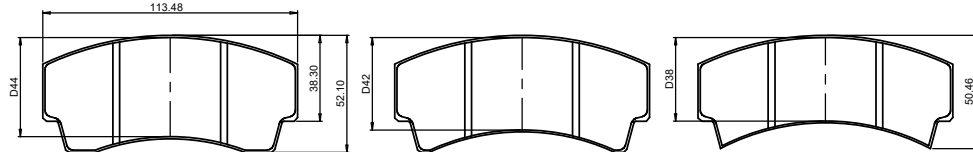
THE CALIPER IS DESIGNED SO THAT THE DISC WILL BE MOUNTED CENTRALLY WITHIN A TOLERANCE OF ±0.50mm. THE CALIPER IS TO BE MOUNTED IN EITHER TRAILING OR LEADING POSITION, ±15° FROM THE VERTICAL. THE DIAMETRICAL CLEARANCE BETWEEN THE DISC OUTSIDE DIAMETER AND THE PATHWAY SHOULD BE 2.50mm NOMINALLY.

DISC AND PAD OPTIONS:

THIS CALIPER IS DESIGNED FOR BOTH CAST IRON AND CARBON-CARBON DISCS AND PADS, THE CP3345 PAD FAMILY IS ONLY TO BE USED FOR CAST IRON DISCS. FOR CARBON-CARBON DISC AND PAD OPTION, PLEASE LIAISE WITH APR TECHNICAL SALES



OPTIMUM BLEED POSITION
FOR OPTIMUM BLEED, THE CALIPER SHOULD BE INSTALLED IN THE LEADING OR TRAILING POSITION ±15° FROM THE VERTICAL AS SHOWN.



CP3345D##	D44	D42	D38
PAD AREA	43.47cm ²	41.40cm ²	38.01cm ²

NOTE: THE PAD SWEEP DEPTH SHOULD BE CHOSEN TO BEST MATCH THE SWEEP DEPTH OF THE DISC USED WITH THIS CALIPER

SCALE 1:1	SHEET 1 OF 2
DRAWN PHILIP BOOKIN	
APPROVED	
DERIVED FROM	
TITLE	4-POT FORGED RADI-CAL CALIPER
DRG NO.	CP5567-16CD

A1 INSTALLATION DRAWING

IF THIS DOCUMENT IS PRINTED IN HARDCOPY, IT IS FOR INFORMATION USE ONLY AND THEREFORE IS NOT SUBJECT TO UPDATING CONTROLS. ALWAYS REFER TO SOLIDWORKS VIEWER FOR LATEST ISSUE



THIS DRAWING IS CONFIDENTIAL AND IS SUPPLIED ON THE EXPRESS CONDITION THAT IT SHALL NOT BE LOANED OR COPIED OR DISCLOSED TO ANY OTHER PERSON OR USED FOR ANY OTHER PURPOSE WITHOUT THE WRITTEN CONSENT OF AP RACING LTD.



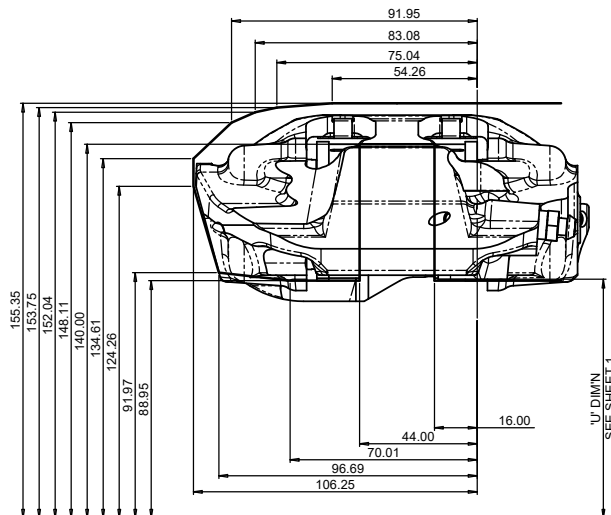
AP Racing
Wheler Road
Coventry
CV3 4LB

Tel: +44 (0) 24 7663 9595
Fax: +44 (0) 24 7663 9559
e-mail: engineering@apracings.co.uk
Web site: <http://www.apracings.com>

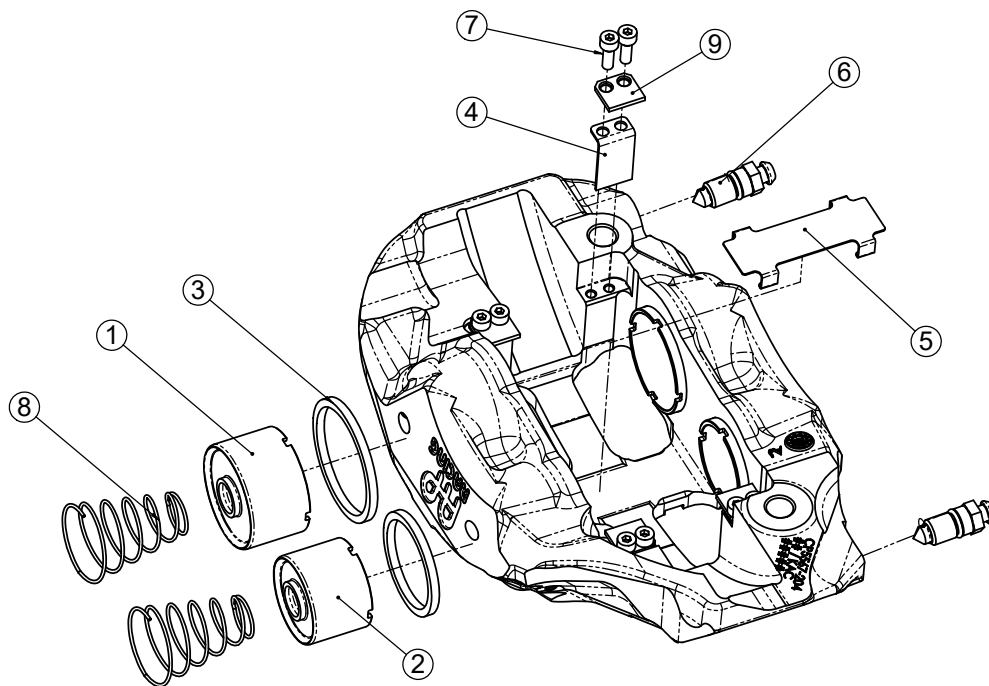
© AP Racing Ltd. 2024

CP5567-14 / 15S4L SPARES

REF	DESCRIPTION	PART NUMBER	QTY PER ASSEMBLY	FITTING INSTRUCTIONS
1	1.625" SST PISTON (K-BORE)	CP5567-117	2	-
2	1.375" SST PISTON (G-BORE)	CP5567-116	2	-
3	SEAL KIT	CP4518-GK	1	REFER TO PUBLICATION REF: P14.290 & P14.220
4	ABUTMENT WEAR PLATE	CP5567-118	4	-
5	BRIDGE WEAR PLATE	CP5567-109	1	-
6	BLEED SCREW KIT	CP3880-1	2	APPLY A SMALL AMOUNT OF LICTITE 270 TO THE THREADS BEFORE FITTING. TIGHTENING TORQUE - 17Nm
7	M4 SCREW	CP3215-115	8	APPLY A 1-2mm DROP OF LOCTITE 270 TO THE 2ND FROM LAST THREAD WHEN FITTING. TIGHTENING TORQUE - 4Nm
8	AKB SPRINGS	CP6518-4LBLL	4	-
9	PAD SUPPORT PLATE	CP4567-121	4	-



RADIAL PROFILE FOR Ø280 DISC



Issue No.	Alterations		Zone	Initials
	Date & No.	Particulars		
-	-	SEE SHEET 1 FOR ISSUE INFORMATION.	-	-

SCALE 1:1	SHEET 2 OF 2
DRAWN	PHILIP BODKIN
APPROVED	
DERIVED FROM	
TITLE	
4-POT RADICAL FORGED CALIPER	
DRG NO.	CP5567-16CD